



Capability Statement



About Us

Established in 2003,
A + T Puckle are a family
owned and operated
electrical contracting
business.

A + T Puckle provide a
high quality and
reputable experienced
service.

Core Values

To build and maintain a satisfied customer base through superior quality service with fair dealings based on trust and respect.

To create long term relationships with customers, suppliers, and most importantly staff.

Operations

At the present moment the company trades under the direction of the Managing Director, Adam Puckle.

Full time staff include, Project Managers, Contract and Office Administrator, Accounts Administrator, Site Foreman and Leading hands, Tradesman and Apprentices. We are well resourced for all areas we service to meet demands.

Experience

With our years of electrical experience our team work across the commercial, industrial, residential and maintenance industries. We believe that with our experience, we can guarantee delivery of the necessary outcomes for our clients.

We are highly skilled, and have knowledge and expertise of technically Complex electrical, communications and AV systems. We are committed to giving a high level of quality through the use of value engineering.



COMMERCIAL



INDUSTRIAL



RESIDENTIAL



MAINTENANCE

Certified and Licensed

All tradesmen are qualified and licensed. A + T Puckle provide staff training with new products to ensure we stay on top of a constantly changing industry.

We believe our training keeps our staff skilled up to the needs of our clients and industry standards.

Skills and Services

A+T Puckle are able to offer numerous different skills and knowledge within the electrical industry.

We offer skills and service in areas of :

- Aged Care
- Preventative Maintenance
- Projects
- Data and Communications
- Nurse Call Systems
- AV Systems
- Fire Detection Systems.

Maintenance Service

The Whiddon Group

A+T Puckle have a long-standing relationship The Whiddon Group. The Whiddon Group are an Aged Care Facility with their main site at Glenfield NSW. A+T Puckle has been the preferred nominated electrical contractor for new buildings, maintenance and repair since 2002. This includes providing 24hr emergency services.

The Whiddon Group also have several sites state wide and A+T Puckle service these sites under their Preventive Maintenance Program and upgrade roll outs.

Uniting Care

Property maintenance and repairs, also new refurbishments. Being operations offices, Child care and Aged Care.

Emergentcold - Freezer Cold Storage Plant

Industrial Cold storage plant. Specialty requirements for electrical maintenance and new installations.

Aged Care

We have 15 years of experience working with the aged care market. We understand the uniqueness of this industry and the nature of their 24/7 service provision. Alteration works affect operations of facilities and people of age require a level of respect while works are completed.



The Whiddon Group

Major projects A+T Puckle have completed at The Whiddon Group Glenfield include:

- Taylor House Building – new aged care build consisting of 92 beds.
- Administration / Dining Room
- Marj Naylor Dining Room
- EPU Building refurbishment

Minchinbury Manor Aged Care Facility – Fugen

Major refurbishment and sections of new build 40 beds. This project is due to be completed in April 2019. Installations completed by A+T Puckle include power, lighting, data and cable tray.

St Joseph's Aged Care Facility

Major refurbishment and sections of new build. This project is currently in progress and will be completed in several stages. Installations by A+T Puckle include power, lighting, data and cable tray.

Clubs

Liverpool Catholic Club – James Clifford

A+T Puckle completed the Liverpool Catholic Club New Car Park in 2014. We installed all mains supplies, switchboards, lighting including the emergency lighting system and power in the new build car park.

Since the completion of this project, the Liverpool Catholic Club have received an award for the lighting design.



Multi Level Carpark

Hospitality

McDonald's

A+T Puckle completed a number of renovation upgrade works and new line roll outs. Including new store builds such as Picton McDonald's.



McDonald's Picton

Residential Development

Glenfield Road Glenfield

A+T Puckle completed this project in 2016 which consisted of 31 town house units and infrastructure. A+T Puckle completed all electrical installations including power, lighting, data and TV.

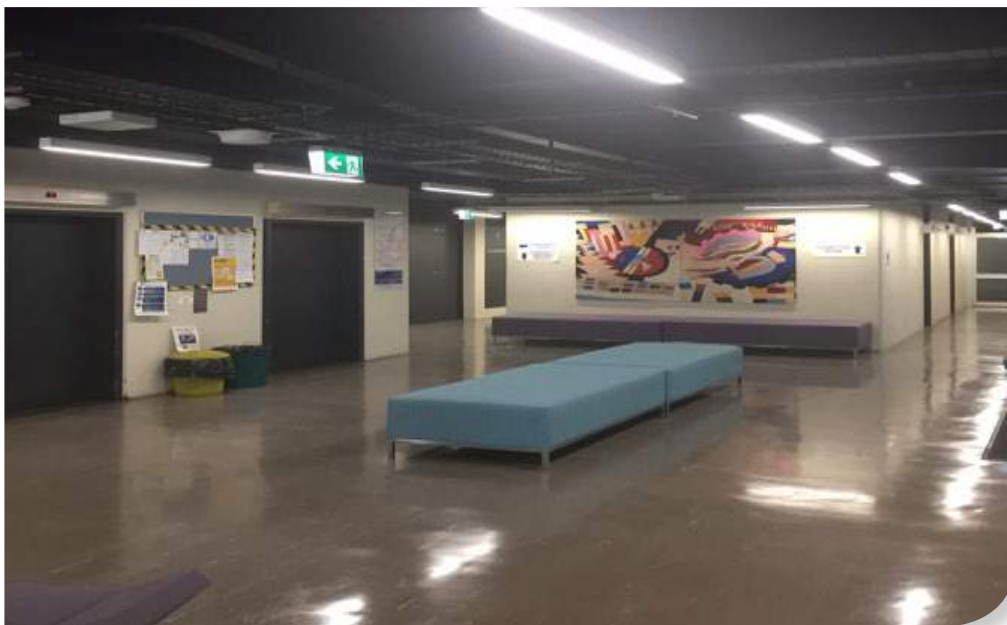


Glenfield

Education

Bankstown TAFE

A+T Puckle were the electrical contractors for Block E Refurbishment six levels, at Bankstown TAFE. This project was completed in 2017. Installations included a new fire detection system, data cabling upgrade, exposed cable tray and lighting.



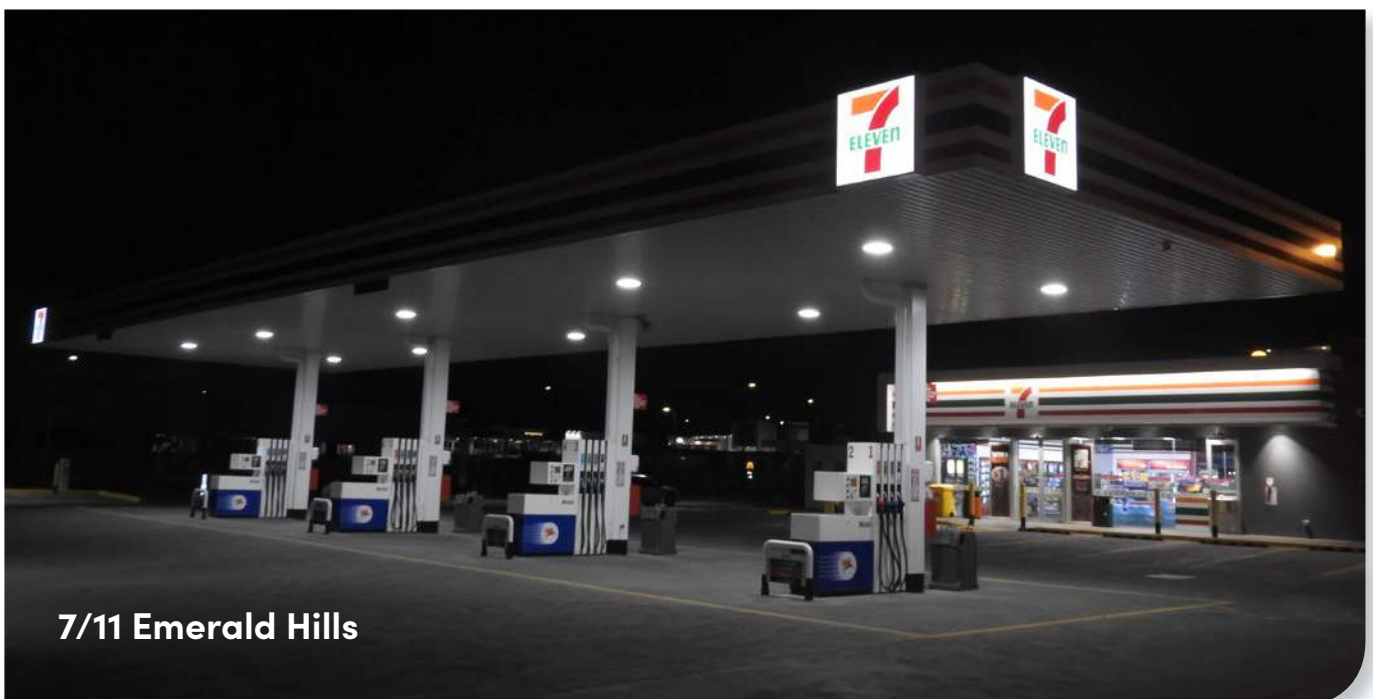
Entry Level

Service Station

Caltex Croydon and 7/11 Emerald Hills – Clifford Constructions

Completed in 2018, A+T Puckle installed the lighting, power, data and infrastructure for the Caltex at Croydon. Due to the success of this project, we were awarded the contract for the 7/11 at Emerald Hills.

The 7/11 at Emerald Hills was also completed in 2018. A + T Puckle installed the lighting, power, data and infrastructure. Due to completing these particular projects, we have a sound knowledge of what's involved in completing such projects.



7/11 Emerald Hills

Management Team

Adam Puckle

MANAGING DIRECTOR

Glenn Cook

PROJECT MANAGER -
PROJECTS

Chris Simich

PROJECT MANAGER -
MINOR WORKS / SERVICE AND
MAINTENANCE

Damian Xuereb

AUDIO VISUAL / SALES

Kathy Harrison

ACCOUNT ADMINISTRATOR

Sonia Sutton

OFFICE ADMINISTRATIONS

Brendan North

FOREMAN

Melissa Chillingworth

ESTIMATOR / CONTRACTS
ADMINISTRATOR

References

The Whiddon Group

Hans Kang, Project Manager
0417 686 409

James Clifford Constructions

Kendall Bull, Project Manager
0414 228 870

Fugen Construction

Joe Vitale, Project Manager
0416 225 580



Contact Us

(02) 4648 3774

office@atpuckle.com.au

atpuckle.com.au

PO Box 67, Cobbitty NSW 2570

ABN

18 131 006 730

Licence

241149Ct

